

780~890nm PM Circulator**Features**

Low insertion loss
High extinction ratio
High stability & Reliability

Applications

Fiber Amplifier
Fiber sensor
Fiber Laser Marking
Laboratory R&D

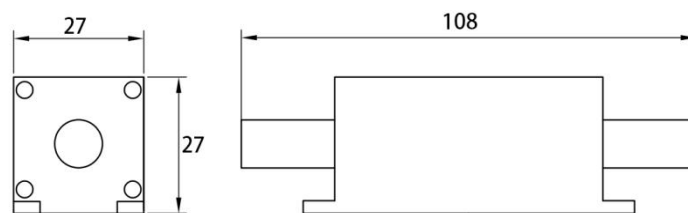
Parameter	High Power	Low Power	Unit
	4 Port	4 Port	
Operating wavelength	780 、 808 、 850 880 or customized		nm
Bandpass	±10		nm
Insertion loss in bandpass at 23°C	≤2.0	≤1.8	dB
Band of isolation	±5		nm
Isolation in band at 23°C	≥22		dB
Typical Peak isolation	≥25		dB
Extinction ratio	≥20		dB
Return loss	≥45		dB
Fiber type (can be customized)	Panda PM fiber		-
Input max. power handling	10	0.3	W
Dimensions (L x W x H)	108x27x27		mm
Operating temperature	-5 ~ +50		°C
Storage temperature	-20 ~ +70		°C

*For 4 port type, the port 1 to 2, 2 to 3, 3 to 4 and 4 to 1 is pass; the port 2 to 1, 3 to 2, 4 to 3 is isolated.

*The precondition of above specifications is extinction ratio of system ≥20dB.

*The above specifications are without connector, the connector handle power ≤0.3W.

*IL is 0.80dB higher, RL is 5dB lower and ER is 3dB lower for each connector added. The default connector key is aligned to slow axis.

Mechanical Dimension**Ordering Information**

specification	GCHPMCIR
Fiber length	specify
Package size	108x27x27
Connector type	FC/UPC, FC/APC etc
Average power handling	300mW, 10W etc
Power condition	C=Continue Wave, P(10)=Pulse Peak Power(10KW),etc
Fiber type	Specify
Pigtail diameter	0=bare fiber, 1=900μm, 2=2mm, 3=3mm
Operating wavelength	1030nm etc
Port type	4(4port)